



# Matrix85 WallForm System



Facebook

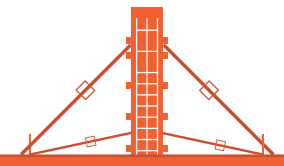


Youtube

RAPID (S.E.A.) ENGINEERING PTE. LTD.

---

- +65 6592 9269
  - sales@rapidsea.sg
  - www.rapidsea.sg
  - 8 Tuas View Square, Singapore 637574
-



Wuxi: Our Primary Production Hub

### RAPID

RAPID Formwork & Scaffolding Co., Ltd. was founded in 2004 and consists of three subsidiaries: RAPID Formwork & Scaffolding Co., Ltd. (RAPID Sujie), Wuxi RAPID Scaffolding Engineering Technology Co., Ltd. (RAPID Sujian), and RAPID Formwork & Scaffolding (Tangshan) Co., Ltd. (RAPID Tangshan).

As a National High-Tech Enterprise, the company integrates R&D, production, and sales with design consultation, leasing, and specialized contracting services for diverse formwork and scaffolding systems. As a pioneer in the Chinese market, RAPID is a recognized industry leader with comprehensive technical capabilities.

Our global operations span over 80 countries and regions, including North America, Europe, South America, Southeast Asia, and Oceania. We are dedicated to providing our clients with professional, high-quality products and exceptional service.



New Production Base in Wuxi

### Production Capacity

The company operates two major production bases in Wuxi and Tangshan, manufacturing a wide range of products, including formwork systems, ring-lock (disk-lock) scaffolding, and aluminum alloy scaffolding.

We implement a rigorous, end-to-end quality management system while leveraging advanced technologies to drive automation and continuous process innovation. Positioned at the high end of the market, we specialize in customized component design and production, maintaining industry-leading standards to meet diverse project requirements and client specifications.



Tangshan Production Base (Hebei Branch)

### Technical Advantages & R&D Capabilities

The company has strong R&D capabilities and has established the Sujie Technology Innovation Platform in collaboration with the Jiangsu Civil Engineering and Architecture Society and Southeast University. In 2020, it founded the Sujie Formwork & Scaffolding Engineering Research Institute, focusing on system design and product development. Its self-developed "Sujie" series includes products such as the JUMPLY Octagonal Disk System and aluminum alloy scaffolding systems.

The company completed a national model project certified by the Ministry of Housing and Urban-Rural Development in 2015, holds over 40 patents, and has taken the lead in drafting key national industry standards including JGJT 231-2021 "Technical Standard for Safety of Socket-type Disk-lock Steel Tubular Scaffolding in Construction" and JG/T 503-2016 "Components of Socket-type Disk-lock Steel Tubular Supports".



Singapore: Our Overseas HQ & Manufacturing Hub for Southeast Asia

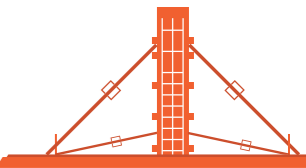
### Engineering Service Capabilities

The company maintains experienced engineering design and specialized construction teams, and holds professional scaffolding contracting qualifications. Supported by rental depots in Wuxi, Zhengzhou, and Shenzhen, we ensure safe and efficient project execution.

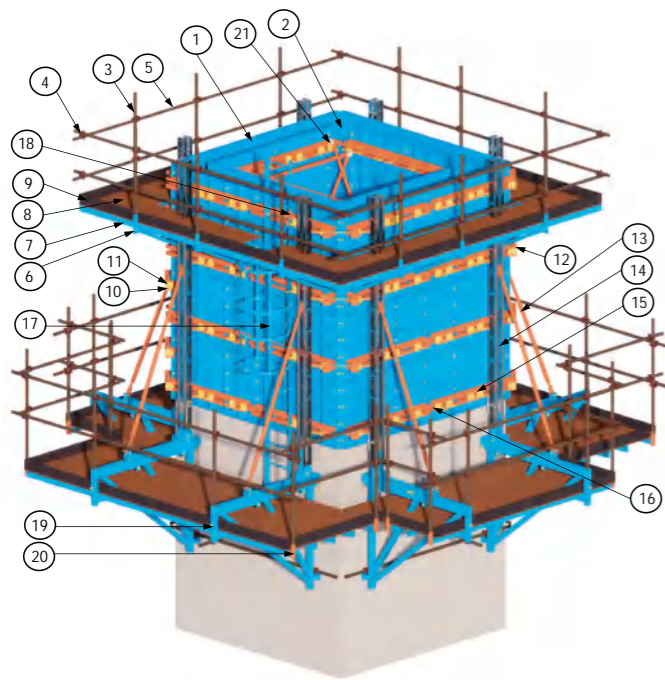
We have contributed to a wide range of landmark projects, including:

Major Infrastructure: Hong Kong-Zhuhai-Macao Bridge, Shanghai Disney Resort, Beijing-Shanghai High-Speed Railway

Complex Structures: Suzhou Xishan Guanyin Statue, Changzhou Zijin Park Observation Tower. International Projects: MahaNakhon Tower (Thailand), Aktogay Copper Mine (Kazakhstan), OT Project (Mongolia).

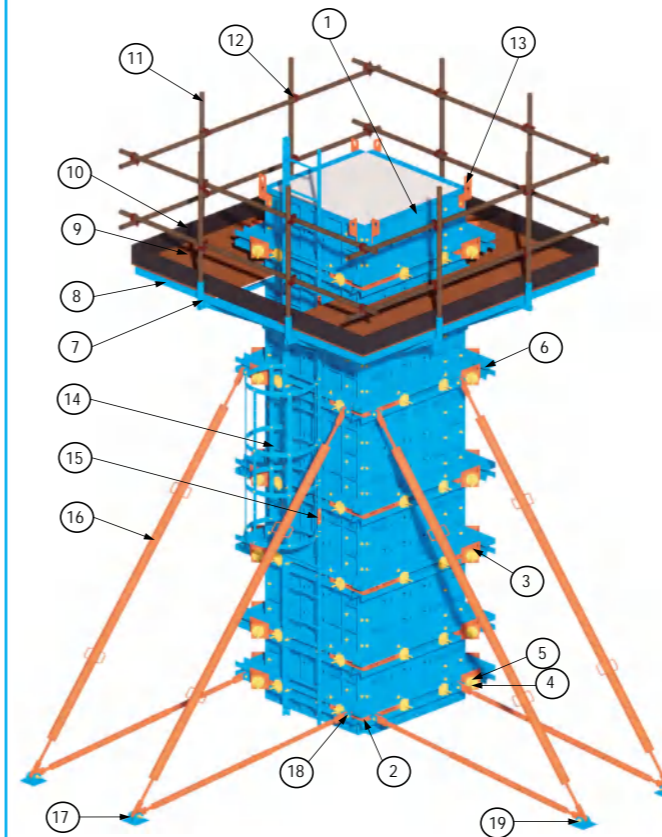


## COREWALL FORMWORK

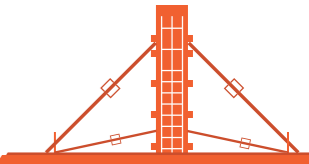


PART LIST	
Item	Description
01	Steel Panel
02	Floating Corner 250x250(FC)
03	Guardrail Post
04	Coupler (By Site)
05	Scaffold Pipe (By Site)
06	Walkway Bracket
07	50X100(D)X2.3mm THK. RHS. (By Site)
08	18mm THK Plywood (By Site)
09	Toe Board (By Site)
10	D20 Tie Rod
11	D20 Wing Nut
12	Waler End
13	Push Pull Prop
14	Soldiers Beam
15	Steel Waler (120 x 53 Twin C- Channel)
16	Connecting Box
17	Cage Rung Ladder
18	Ladder Joint Plate
19	Climber
20	Guardrail Post Bracket
21	Prop Connector Type 2

## COLUMN FORMWORK



PART LIST	
Item	Description
01	Steel Panel
02	L Shape Waler Splice
03	Waler End (Heavy Duty)
04	D20 Tie Rod
05	D20 Wing Nut
06	Steel Waler(120 x 53 Twin C-Channel)
07	Walkway Bracket
08	50X100(D)X2.3mm THK. RHS. (By Site)
09	18mm THK Plywood (By Site)
10	Toe Board (By Site)
11	Guardrail Post
12	Coupler(By Site)
13	Lifting Hook
14	Cage Rung Ladder
15	Ladder Joint Plate
16	Strut
17	Foot Plate
18	Prop Connector Type 1
19	Speed Thread Bolt



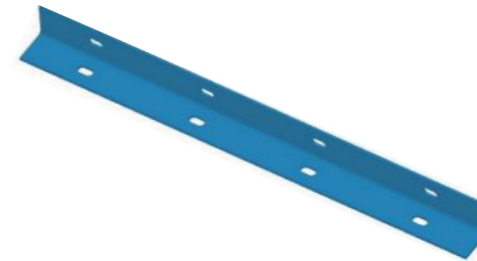
### 1.1 Steel Panel (H×W)



#### PART LIST

Item	Description	Weight[kg]	Item Code
01	Panel-500(H)×250(W)mm	12.88	5666010016
02	Panel-500(H)×300(W)mm	14.54	5666010007
03	Panel-500(H)×350(W)mm	16.20	5666010008
04	Panel-500(H)×550(W)mm	25.84	5666010009
05	Panel-500(H)×1000(W)mm	46.40	5666010010
06	Panel-750(H)×200(W)mm	16.39	5666010033
07	Panel-750(H)×250(W)mm	18.77	5666010034
08	Panel-750(H)×300(W)mm	21.08	5666010035
09	Panel-750(H)×350(W)mm	23.44	5666010036
10	Panel-750(H)×550(W)mm	35.76	5666010012
11	Panel-750(H)×1000(W)mm	63.79	5666010037
12	Panel-1000(H)×200(W)mm	21.49	5666010017
13	Panel-1000(H)×250(W)mm	24.59	5666010018
14	Panel-1000(H)×300(W)mm	27.55	5666010013
15	Panel-1000(H)×350(W)mm	30.58	5666010019
16	Panel-1000(H)×550(W)mm	45.40	5666010024
17	Panel-1000(H)×1000(W)mm	81.42	5666010014
18	Panel-2500(H)×550(W)mm	112.60	5666010011
19	Panel-3000(H)×200(W)mm	62.02	5666010001
20	Panel-3000(H)×250(W)mm	70.54	5666010015
21	Panel-3000(H)×300(W)mm	78.98	5666010002
22	Panel-3000(H)×350(W)mm	87.44	5666010003
23	Panel-3000(H)×550(W)mm	129.47	5666010004
24	Panel-3000(H)×1000(W)mm	227.01	5666010005

### 1.2 External Corner Angle L80×80(ECA)



#### PART LIST

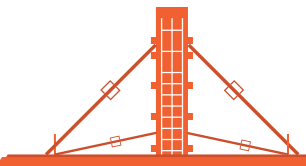
Item	Description	Weight[kg]	Item Code
01	500mm(H) ECA	3.51	5666030003
02	750mm(H) ECA	5.39	5666030004
03	1000mm(H) ECA	7.19	5666030001
04	1500mm(H) ECA	10.79	5666030008
05	2500mm(H) ECA	17.97	5666030005
06	3000mm(H) ECA	21.57	5666030002

### 1.3 Internal Corner Angle 250×250(ICA)



#### PART LIST

Item	Description	Weight[kg]	Item Code
01	500mm(H) ICA	19.84	5666020005
02	1000mm(H) ICA	37.52	5666020007
03	3000mm(H) ICA	107.74	5666020003



### 1.4 Floating Corner 250x250(FC)



#### PART LIST

Item	Description	Weight[kg]	Item Code
01	500 mm(H) FC	27.10	5666020006
02	1000mm(H) FC	49.64	5666020008
03	3000mm(H) FC	142.18	5666020004
04	3500mm(H) FC	123.31	5666020001
05	5000mm(H) FC	174.33	5666020002

### 1.5 Angle Steel(FC)



#### PART LIST

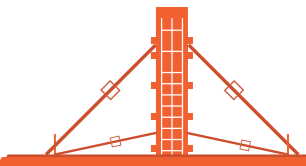
Item	Description	Weight[kg]	Item Code
01	3500 mm(H) Fit for Floating Corner	23.12	5666090001
02	5000mm(H) Fit for Floating Corner	33.23	5666090002

### 1.6 Steel Waler (100 x 48 Twin C- Channel)

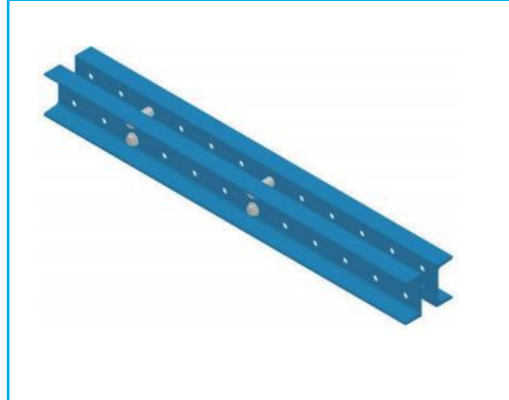


#### PART LIST

Item	Description	Weight[kg]	Item Code
01	Standard Waler 750mm Long	15.37	5666040012
02	Standard Waler 1250mm Long	25.37	5666040032
03	Standard Waler 1500mm Long	30.37	5666040009
04	Standard Waler 1750mm Long	35.37	5666040004
05	Standard Waler 2000mm Long	40.37	5666040005
06	Standard Waler 2500mm Long	51.09	5666040013
07	Standard Waler 2750mm Long	56.09	5666040018
08	Standard Waler 3000mm Long	61.09	5666040006
09	Standard Waler 3250mm Long	66.09	5666040007
10	Standard Waler 3500mm Long	71.09	5666040008
11	Standard Waler 3750mm Long	75.59	5666040019
12	Standard Waler 4000mm Long	80.59	5666040020
13	Standard Waler 4250mm Long	85.83	5666040010
14	Standard Waler 4500mm Long	91.32	5666040033



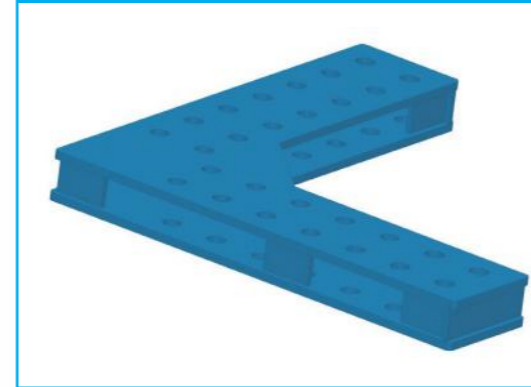
### 1.7 Steel Waler (120 x 53 Twin C- Channel)



#### PART LIST

Item	Description	Weight[kg]	Item Code
01	Standard Waler 900mm Long	23.20	5666040034
02	Standard Waler 1200mm Long	30.14	5666040017
03	Standard Waler 1500mm Long	36.78	5666040001
04	Standard Waler 1800mm Long	43.72	5666040021
05	Standard Waler 2400mm Long	58.32	5666040035
06	Standard Waler 3000mm Long	72.92	5666040036

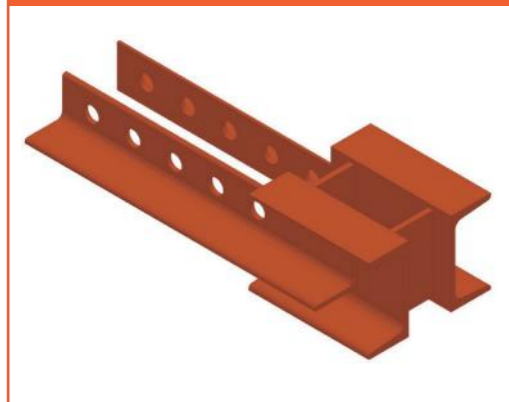
### 1.9 L Shape Waler Splice -440×440×110



#### PART LIST

Item	Description	Weight[kg]	Item Code
01	Compatible for 120 x 53 TwinC- Channel	11.33	5666060001

### 1.8 Waler Exetion



#### PART LIST

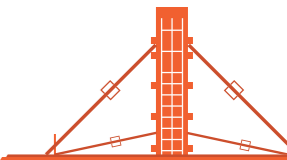
Item	Description	Weight[kg]	Item Code
01	120mm, Compatible for 100 x 48 Twin C- Channel	5.50	5666040037
02	145mm, Compatible for 100 x 48 Twin C- Channel	6.00	5666040022
03	245mm, Compatible for 100 x 48 Twin C- Channel	8.00	5666040011

### 1.10 Waler Splice

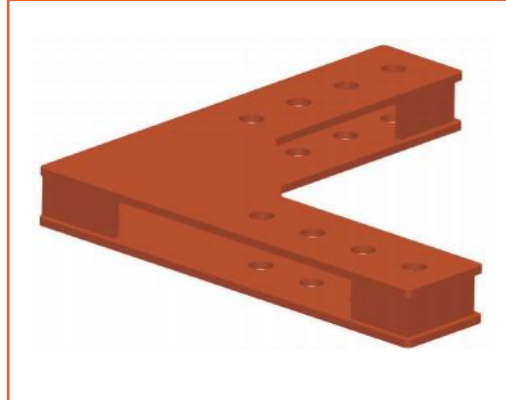


#### PART LIST

Item	Description	Weight[kg]	Item Code
01	400mm, Compatible for 100 x 48 Twin C- Channel	3.47	5666060003
02	550mm, Compatible for 100 x 48 Twin C- Channel	4.30	5666060010



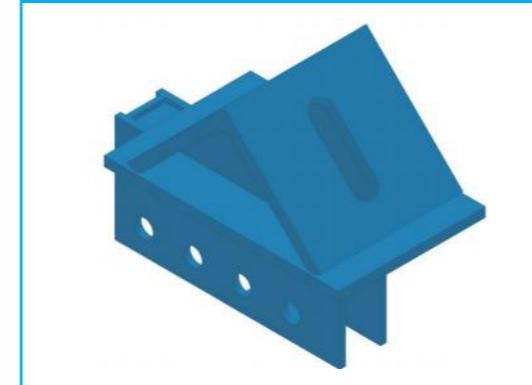
**1.11 L Shape Waler Splice  
-365×365×80**



**PART LIST**

Item	Description	Weight[kg]	Item Code
01	Compatible for 100 x 48 Twin C- Channel	5.95	5666060011

**1.13 Waler End (Heavy Duty)**



**PART LIST**

Item	Description	Weight[kg]	Item Code
01	Compatible for 120 x 53 TwinC- Channel	9.96	5666080001

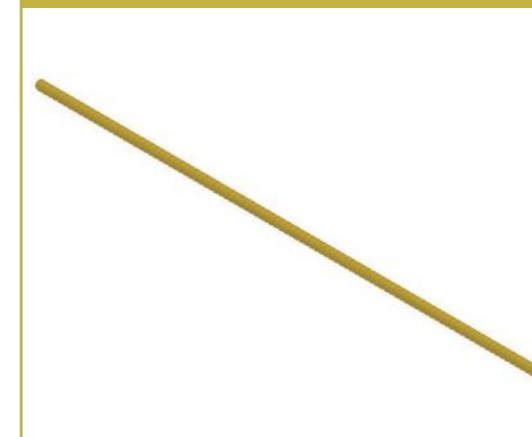
**1.12 Waler End**



**PART LIST**

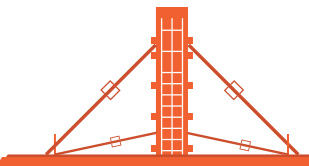
Item	Description	Weight[kg]	Item Code
01	Compatible for 100 x48 Twin C- Channel	4.41	5666080017

**1.14 D15 Tie Rod (45 Steel)**



**PART LIST**

Item	Description	Weight[kg]	Item Code
01	Tie Rod D15mm × 1000mm 45 Steel	1.50	T4FW00013
02	Tie Rod D15mm × 1800mm 45 Steel	2.70	T4FW00103
03	Tie Rod D15mm × 2000mm 45 Steel	3.00	T4FW00104



**1.15 D15 Tie Rod**  
(Screw-Thread Steel Bars)



**PART LIST**

Item	Description	Weight[kg]	Item Code
01	Tie Rod D15mm × 2000 mm PSB 830	3.00	T4FW00104

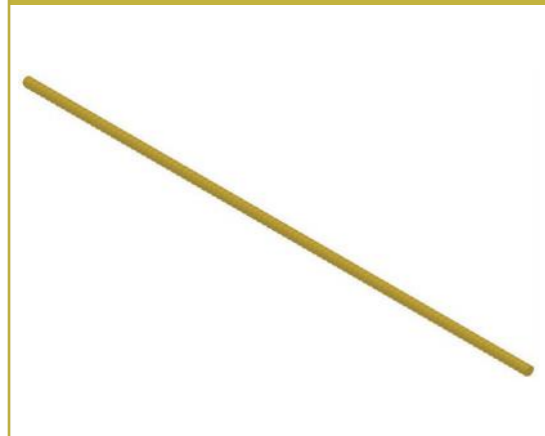
**1.17 D15 J HOOK**



**PART LIST**

Item	Description	Weight[kg]	Item Code
01	D 15 J-HOOK	0.47	T4FW00025

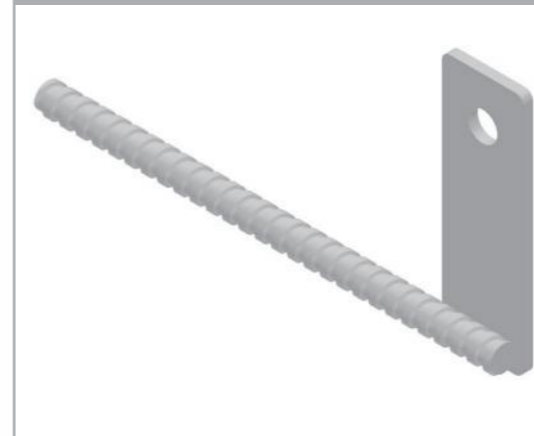
**1.16 D20 Tie Rod**



**PART LIST**

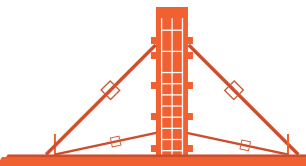
Item	Description	Weight[kg]	Item Code
01	Tie Rod D20mm × 800mm 45 Steel	2.71	T4FW00004
02	Tie Rod D20mm × 1200mm 45 Steel	4.07	T4FW00105

**1.18 D15 L-Shaped Connector**

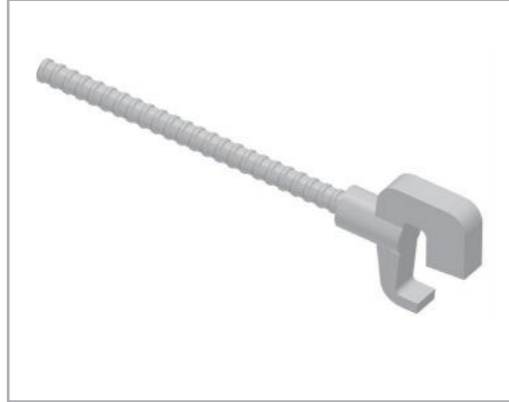


**PART LIST**

Item	Description	Weight[kg]	Item Code
01	D15 150×50mm	0.77	5666080040



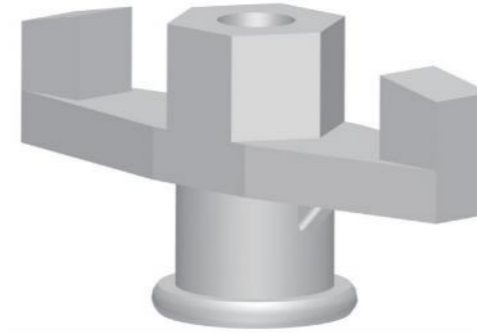
### 1.19 D15 Waler clamp



#### PART LIST

Item	Description	Weight[kg]	Item Code
01	D15×290mm,Compatible for 100 x 50 /120x53 Twin C- Channe	0.89	T4FW00005

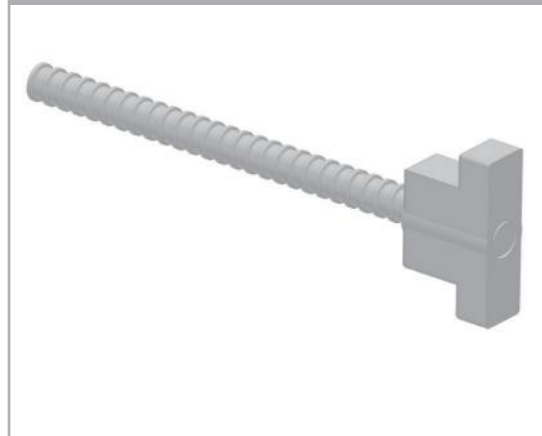
### 1.21 D15 Wing Nut (Mountain Shape)



#### PART LIST

Item	Description	Weight[kg]	Item Code
01	Compatible for D15 Tie Rod	0.10	T4FW00026

### 1.20 D15 T-Shaped Connector



#### PART LIST

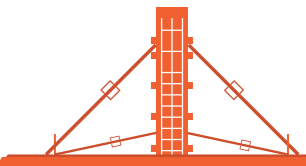
Item	Description	Weight[kg]	Item Code
01	Compatible for Prop Connector Type 2	0.87	5666080018

### 1.22 D15 Wing Nut

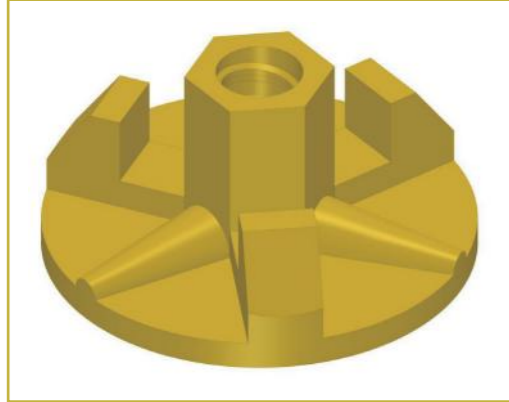


#### PART LIST

Item	Description	Weight[kg]	Item Code
01	Ø100mm	0.52	T4FW00002
02	Ø120mm	0.94	T4FW00066



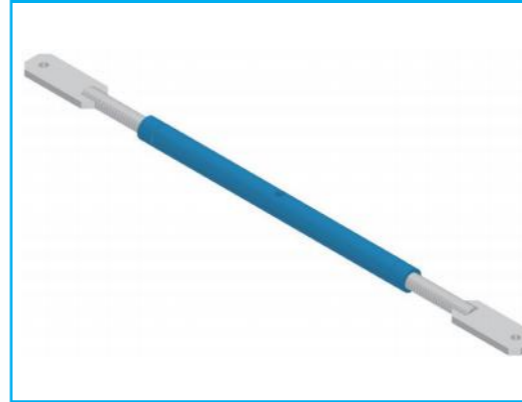
### 1.23 D20 Wing Nut



#### PART LIST

Item	Description	Weight[kg]	Item Code
01	Ø 110mm	0.85	T4FW00003

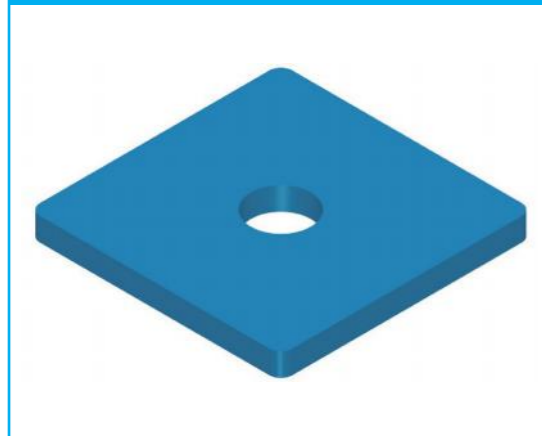
### 1.25 Stabilizer Prop



#### PART LIST

Item	Description	Weight[kg]	Item Code
01	Stabilizer Prop 1040~1440	10.56	5666070003

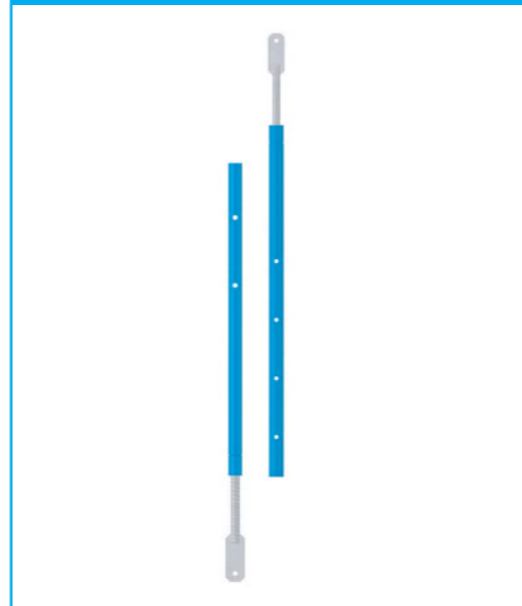
### 1.24 Plate Washer 110×110×10



#### PART LIST

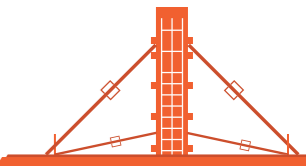
Item	Description	Weight[kg]	Item Code
01	Plate Washer 110×110×10mm	0.91	5666080041

### 1.26 Push Pull Prop

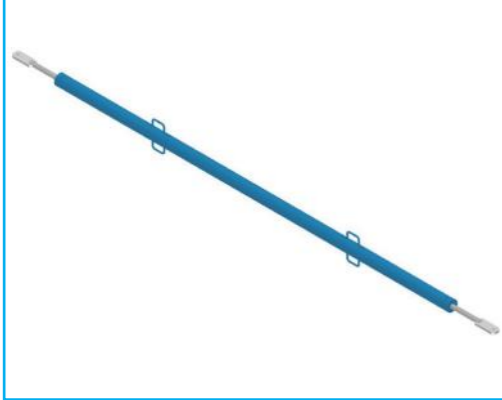


#### PART LIST

Item	Description	Weight[kg]	Item Code
01	Push Pull-1820~2970mm	19.48	5666070006
02	Push Pull-2070~3220mm	21.62	5666070004
03	Push Pull-2570~4220mm	25.29	5666070005



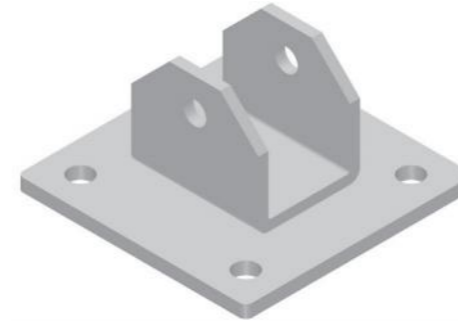
### 1.27 Strut



#### PART LIST

Item	Description	Weight[kg]	Item Code
01	Strut -3800~4200mm	39.56	5666070009
02	Strut -3800~4200mm	46.93	5666070025
03	Strut -3800~4200mm	113.48	5666070026
04	Strut-8900~12100mm	149.25	5666070018

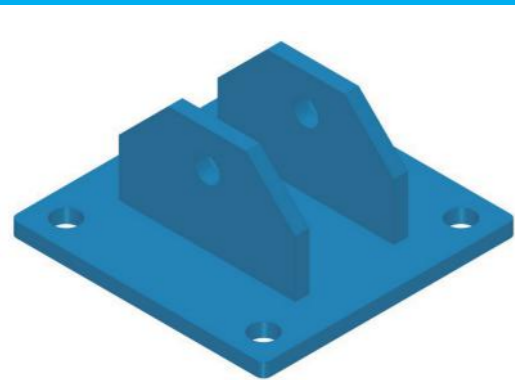
### 1.29 Swivel Foot Plate



#### PART LIST

Item	Description	Weight[kg]	Item Code
01	Swivel Foot Plate -180×180mm	3.76	5666070011

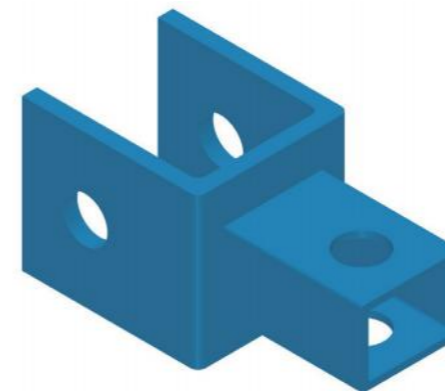
### 1.28 Foot Plate



#### PART LIST

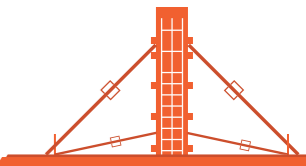
Item	Description	Weight[kg]	Item Code
01	Foot Plate-180×180mm	2.92	5666070002

### 1.30 Prop Connector Type 1

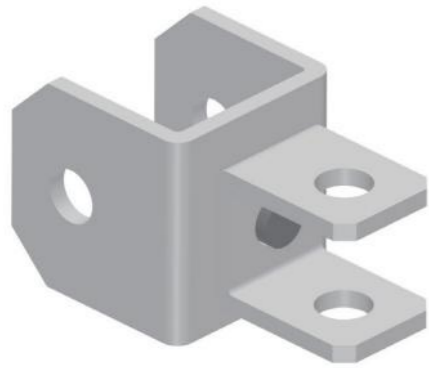


#### PART LIST

Item	Description	Weight[kg]	Item Code
01	Compatible for 120x53 Twin C- Channel	0.72	5666070010



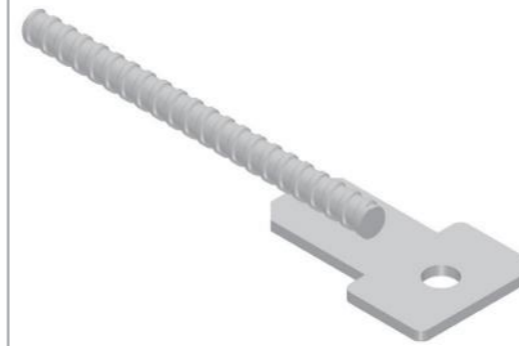
### 1.31 Swivel Prop Connector



#### PART LIST

Item	Description	Weight[kg]	Item Code
01	Swivel Prop Connector -70×67×70mm Compatible for 120 x 53 Twin C- Channel	0.85	5666070012

### 1.33 D15 Plate Connector



#### PART LIST

Item	Description	Weight[kg]	Item Code
01	D15 Plate Connector 283×75mm	0.64	5666080035

### 1.32 Prop Connector Type 2



#### PART LIST

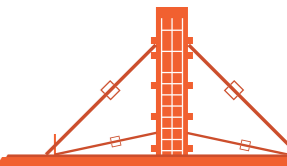
Item	Description	Weight[kg]	Item Code
01	Universal, Fit for 100 x 48 & 120x53 Twin C- Channel Compatible for D15&D20 Tie rod.	0.80	5666070016

### 1.34 Waler Connector

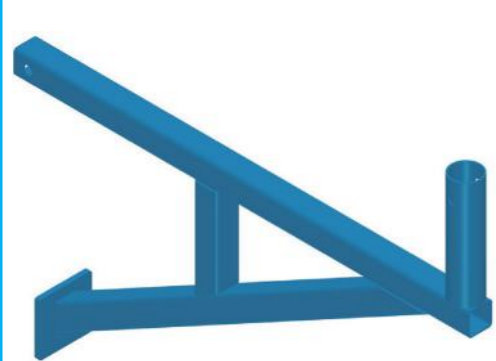


#### PART LIST

Item	Description	Weight[kg]	Item Code
01	Waler Connector-194mm Compatible for 120x53 Twin C- Channel	1.12	5666080015



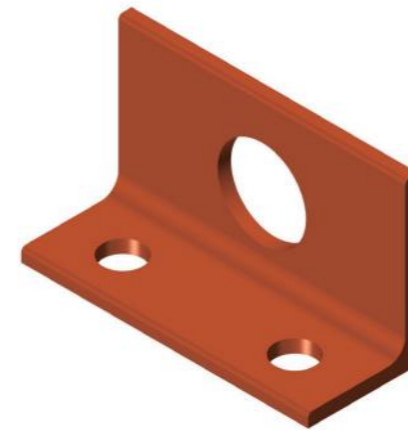
### 1.35 Walkway Bracket



#### PART LIST

Item	Description	Weight[kg]	Item Code
01	Walkway Bracket 950mm	10.12	5666080002

### 1.37 Lifting Hook (ICA)



#### PART LIST

Item	Description	Weight[kg]	Item Code
01	Lifting Hook For Internal Corner Angle	0.66	5666080019

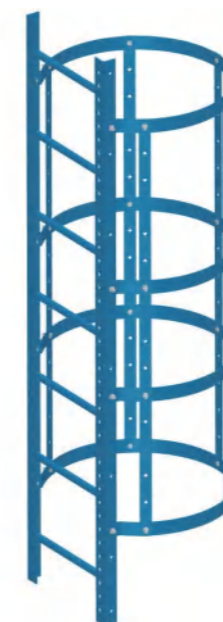
### 1.36 Lifting Hook



#### PART LIST

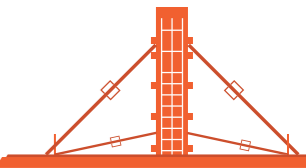
Item	Description	Weight[kg]	Item Code
01	Lifting Hoo	2.20	5666080013

### 1.38 Cage Rung Ladder

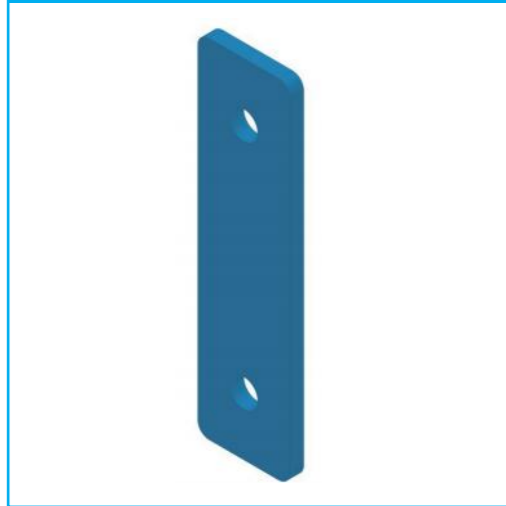


#### PART LIST

Item	Description	Weight[kg]	Item Code
01	Cage RungLadder -2100(H)×450(W)	30.00	5666080003
01	Cage Rung Ladder -1500(H)×450(W)	21.63	5666080007



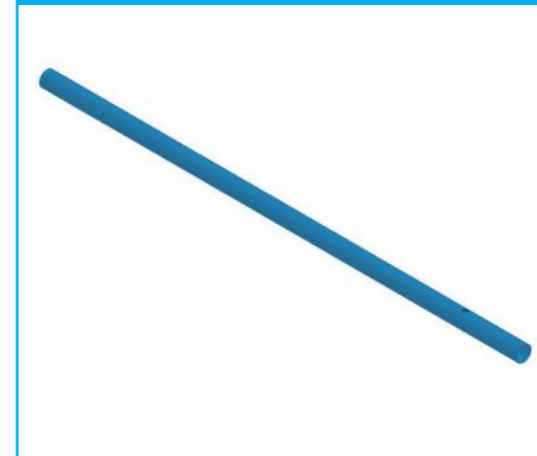
### 1.39 Ladder Joint Plate



#### PART LIST

Item	Description	Weight[kg]	Item Code
01	Ladder Joint Plate 150x40x6	0.27	5666080010

### 1.41 Guardrail Post



#### PART LIST

Item	Description	Weight[kg]	Item Code
01	Guardrail Post 1500mm	4.23	5666080024

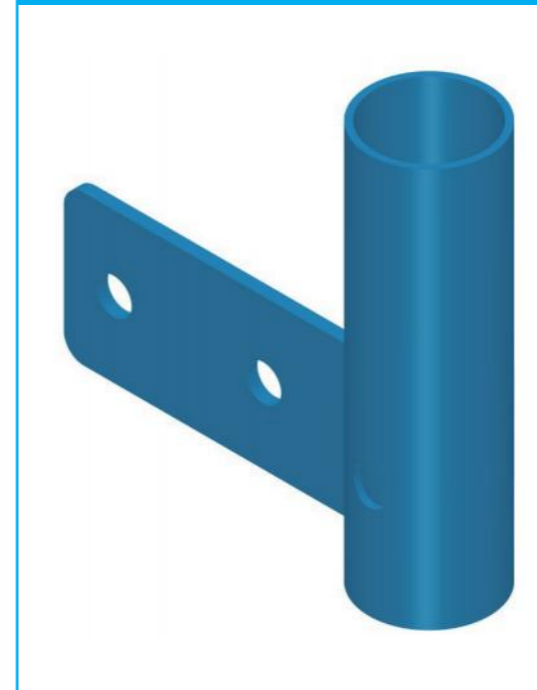
### 1.40 M14 T Bolt Connector For Ladder



#### PART LIST

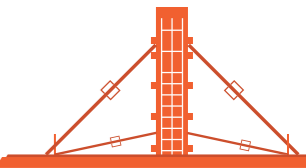
Item	Description	Weight[kg]	Item Code
01	M14x140, 8.8 mag Full-thread Bolt	0.64	5666080004
02	M14 Flange Nut	0.027	T4LS00191

### 1.42 Guardrail Post Bracket



#### PART LIST

Item	Description	Weight[kg]	Item Code
01	Guardrail Post Bracket -Ø60.3×3.2×200	1.39	5666080011



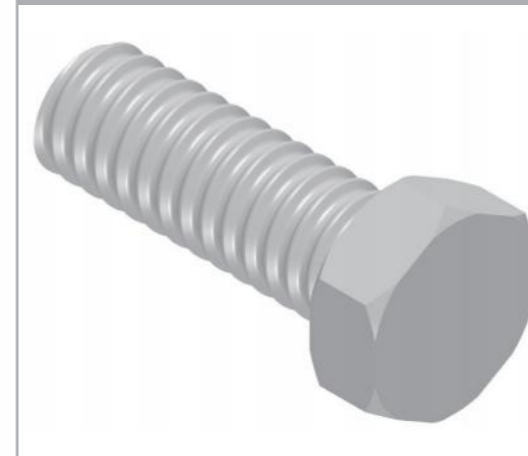
### 1.43 Tenson Pin



#### PART LIST

Item	Description	Weight[kg]	Item Code
01	Tenson Pin Ø17.5 x100	0.19	/

### 1.45 Speed Thread Bolt (FT)



#### PART LIST

Item	Description	Weight[kg]	Item Code
01	M16x45, 8.8 ma Full-Thread Bolt	0.091	T4LS00454

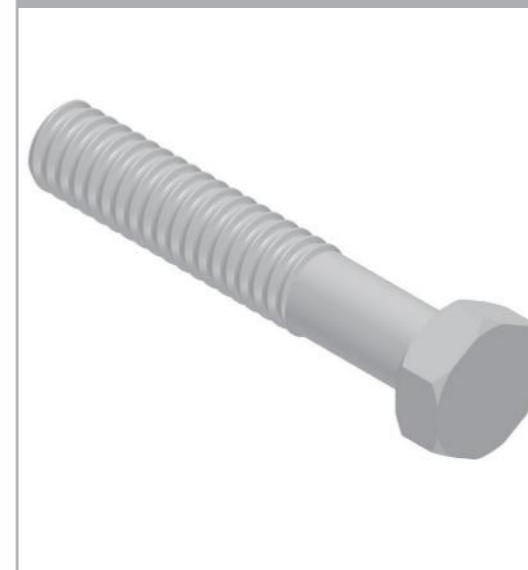
### 1.44 Type B Pin



#### PART LIST

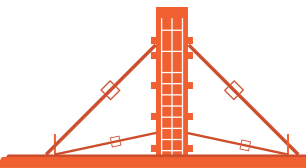
Item	Description	Weight[kg]	Item Code
01	Type B Pin 2.5x65, Ø 20mm	0.008	T4QT00690

### 1.46 Speed Thread Bolt (HT)

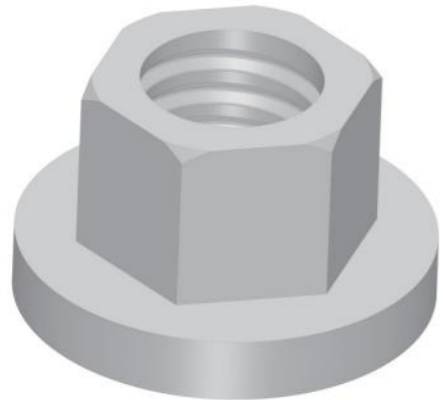


#### PART LIST

Item	Description	Weight[kg]	Item Code
01	M16x90 8.8 mag, Half-Thread Bolt	0.16	T4LS00455
02	M16x130, 8.8 mag, Half-Thread Bolt	0.23	T4LS00456
03	M16x180, 8.8 mag, Half-Thread Bolt	0.31	T4LS00457



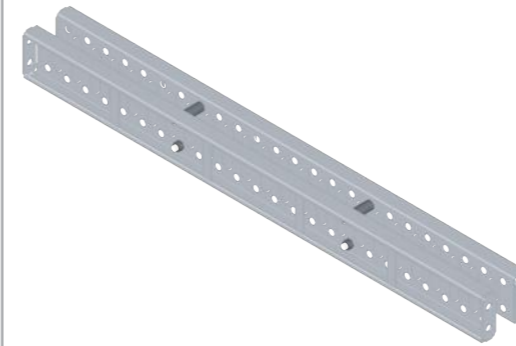
### 1.47 Speed Thread Flange Nut



#### PART LIST

Item	Description	Weight[kg]	Item Code
01	M16, 8.8 mag	0.046	T4LS00458

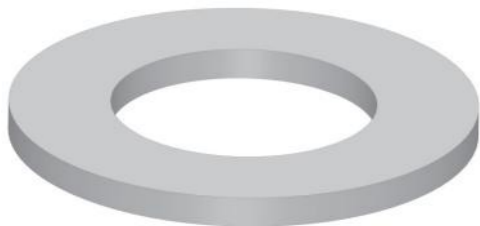
### 1.49 Soldiers Beam



#### PART LIST

Item	Description	Weight[kg]	Item Code
01	130mm×45mm×1500mm	19.95	/
02	130mm×45mm×2000mm	26.60	/
03	130mm×45mm×2550mm	32.90	/
04	130mm x 45 mm×3000mm	39.90	/
05	130mm x 45mm×4000mm	53.20	/

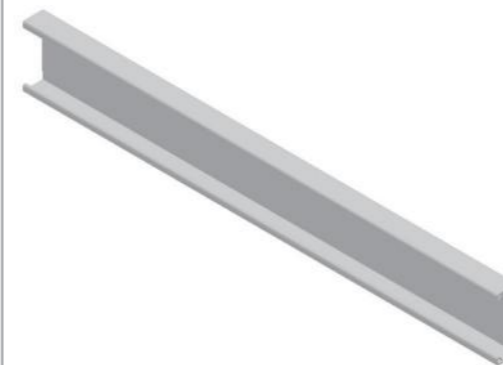
### 1.48 Flat Washer



#### PART LIST

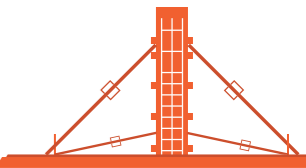
Item	Description	Weight[kg]	Item Code
01	Flat Washer 17x 30x2.0	0.00754	T4LS00253

### 1.50 Sige Lipped Channel



#### PART LIST

Item	Description	Weight[kg]	Item Code
01	130mm×45mm×1500mm	8.99	/
02	130mm×45mm×2000mm	11.98	/
03	130mm×45mm×2550mm	15.27	/
04	130mm×45mm×3000mm	17.97	/
05	130mm×45mm×4000mm	23.96	/



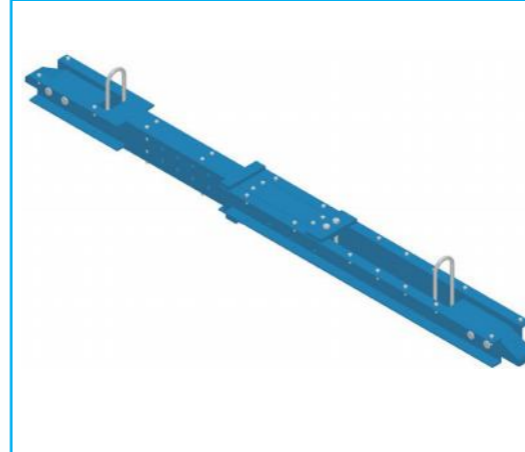
### 1.51 Connecting Box



#### PART LIST

Item	Description	Weight[kg]	Item Code
01	Connecting Box 600mm	5.39	/

### 1.53 Internal Platform Beam



#### PART LIST

Item	Description	Weight[kg]	Item Code
01	Internal Platform Beam 2400~3100mm	173.83	5666080037
02	Internal Platform Beam 2950~4000	208.71	5666080038

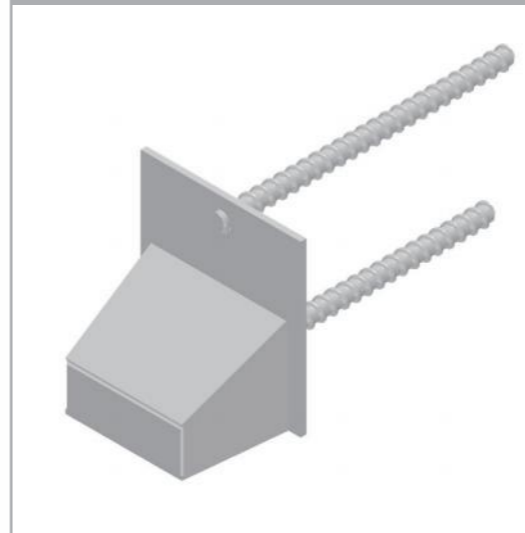
### 1.52 Climber



#### PART LIST

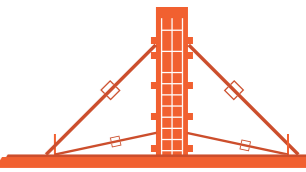
Item	Description	Weight[kg]	Item Code
01	Climber	97.70	5666080021

### 1.54 Steel Box

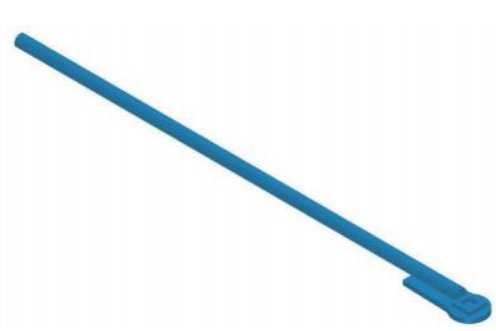


#### PART LIST

Item	Description	Weight[kg]	Item Code
01	Steel Box	7.85	5666080039



### 1.55 Climber Rollback Wrench



#### PART LIST

Item	Description	Weight[kg]	Item Code
01	ClIPaneling Form Ratchet Adjuster, L=1000,Ø25	4.68	T4FW00059

### 1.57 Leveling Screw



#### PART LIST

Item	Description	Weight[kg]	Item Code
01	Leveling Screw D28x300	1.46	T4FW00017

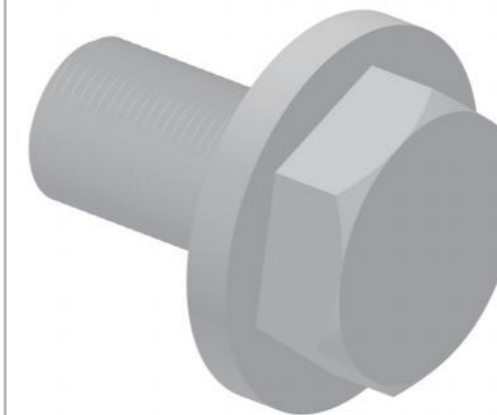
### 1.56 Leveling Screw Connection Nuts



#### PART LIST

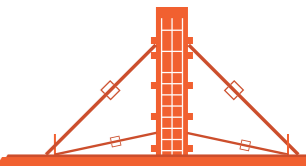
Item	Description	Weight[kg]	Item Code
01	Leveling Screw Connection Nuts D28 r	1.50	T4FW00018

### 1.58 M30 Hex Flange Bolt

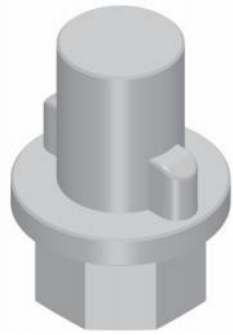


#### PART LIST

Item	Description	Weight[kg]	Item Code
01	M30×50mm, 10.9 mag, Full-thread bolt	0.37	4LS00480
02	M30×80mm, 10.9 mag, Half-thread bolt	0.59	4LS00475
03	M30×100mm, 10.9 mag, Half-thread bolt	0.87	4LS00479



### 1.59 Anchor Steel Cone Extractor Tool



#### PART LIST

Item	Description	Weight[kg]	Item Code
01	Compatible for D20/M30 Anchor Steel Cone	0.50	T4FW00016

### 1.61 Anchor Steel Cone



#### PART LIST

Item	Description	Weight[kg]	Item Code
01	Anchor Steel Cone D20/M30,L=120mm	1.20	T4FW00027

### 1.60 Anchor plate D20



#### PART LIST

Item	Description	Weight[kg]	Item Code
01	Anchor plate D20 170mm	2.00	5666080009

### 1.62 Anchor Shoe



#### PART LIST

Item	Description	Weight[kg]	Item Code
01	Equipped with M30 Bolt	0.60	T4FW00015

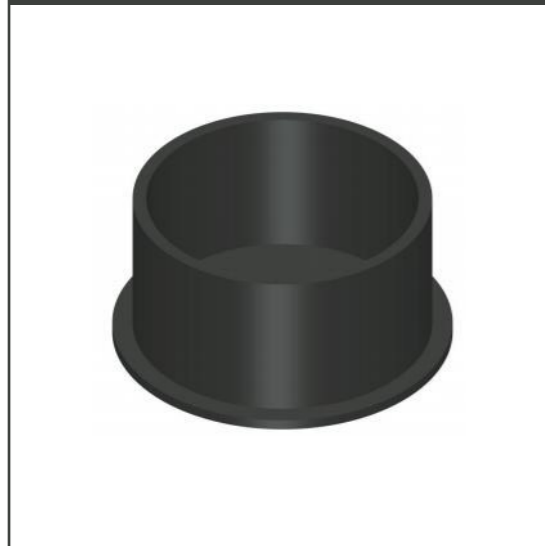
**1.63 U-Bolt with M12 Hex Nuts**  
M12×206×120U



**PART LIST**

Item	Description	Weight[kg]	Item Code
01	Equipped with M12 Flange Nut	0.52	T4QT00902

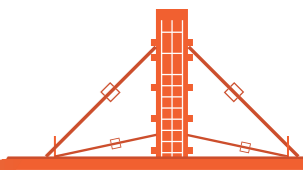
**1.64 Formwork Tie-Hole Plug**



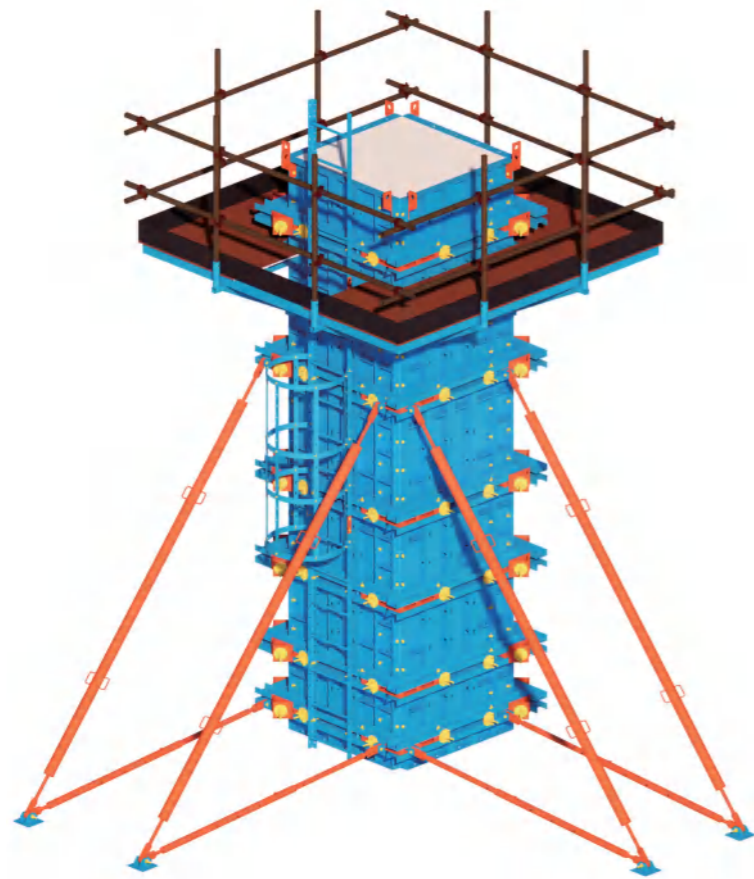
**PART LIST**

Item	Description	Weight[kg]	Item Code
01	Compatible for D15 Tie-Hole, Ø20	0.03	6FC00032





# COLUMN FORMWORK



The Rapid Matrix85 WallForm product addresses complex challenges in different building scenarios, and our research and development goes beyond drawings. By deeply integrating rich on-site construction experience with cutting-edge design concepts, the Rapid brand can provide customers with highly customized column formwork solutions. This is not only a practice of "Rapid Efficiency", but also our commitment to helping customers overcome difficulties and achieve value optimization.



Ramp Column Formwork -1.2m×1.2m×4.9m

## PROJECT REFERENCE

### Column Formwork

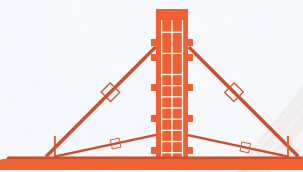
Project: 5 Sty Warehouse with Ancillary Office at Pioneer Turn  
Building: 5 storeys  
Typical Floor Height: 13.125 m  
Total Height: 75.775 m  
Scope: Formwork for car ramp columns, 12.3m-high factory building columns, lift (elevator) shafts, and stairwell climbing formwork systems.



Ramp Column Formwork -1.6×1.6×4.3m



Ramp Column Formwork -1.2m×1.2m×4.9m



Warehouse Column Formwork 1.2m×1.2m×12m

## Column Formwork

Project: 6 Sty Warehouse with 2-storey Container Depot and Ancillary Office at Sunview Road/Way

Building: 6 storeys

Typical Floor Height: 12.6 m

Total Height: 77.37 m

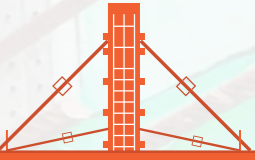
Scope: Formwork for car ramp columns, 12m-high factory building columns, lift (elevator) shafts, and stairwell climbing formwork systems.



Warehouse Column Formwork 1.2m×1.2m×12m



Warehouse Column Formwork 1.2m×1.2m×12m



## Column Formwork

Project: 6 Sty Warehouse with 2-storey Container Depot and Ancillary Office at Sunview Road/Way

Building: 5 storeys

Typical Floor Height: 13.125 m

Total Height: 75.775 m

Scope: Formwork for car ramp columns, 12.3m-high factory building columns, lift (elevator) shafts, and stairwell climbing formwork systems.



Ramp Column Formwork-1.3x1.3x4.1m



Ramp Column Formwork-1.3x1.3x4.1m

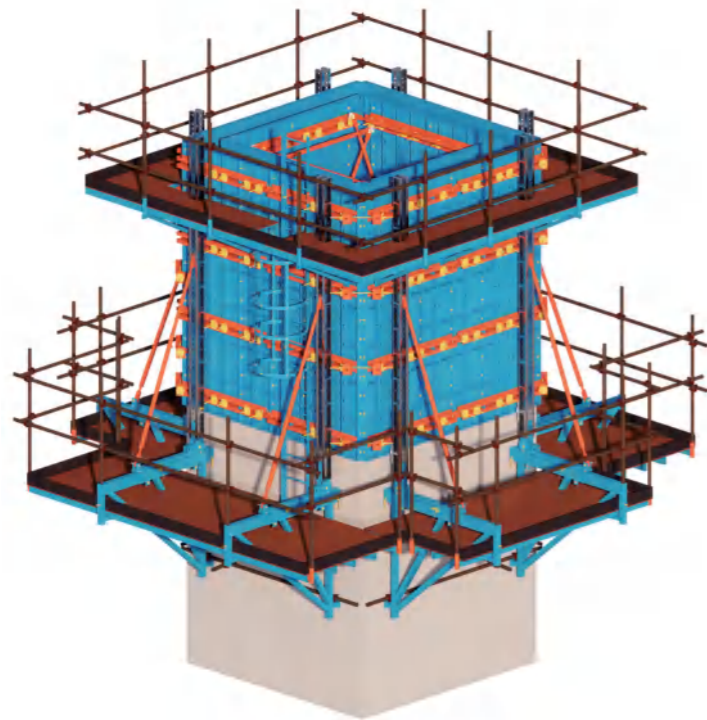


Ramp Column Formwork-1.3x1.3x4.1m



Formed Concrete Surface Quality

## COREWALL FORMWORK

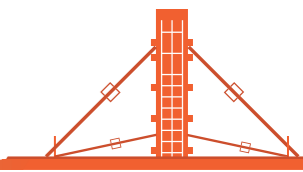


**Build the core with precision and control the high altitude**

**- Rapid Matrix85 WallForm system.**

In the face of complex core tube construction scenarios in super high-rise construction, our research and development never remains superficial. By deeply integrating rich on-site construction experience with high-precision design capabilities, the Rapid brand can provide customized formwork solutions for customers to cope with various structural changes and working conditions challenges.

This is not only the ultimate embodiment of "Rapid Efficiency" in the vertical field, but also our solid commitment to helping customers overcome core technological barriers and achieve both safety and speed excellence.



## Corewall Formwork

Project: 7 Harrison Road Warehouse

Building: 8 storeys

Typical Floor Height: 5.075 m

Total Height: 58.55 m

Scope: Formwork for factory building columns, lift (elevator) shafts, and stairwell climbing formwork systems.



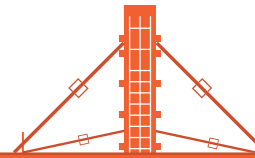
Lift Wall Formwork-FL-1(6.7mx3.mx0.3m(THK)x5m (H) )&FL-2(2.4mx2.4mx0.3m(THK)x5m (H) )



Lift Wall Formwork-FL-2(2.4mx2.4mx0.3m(THK)x5m (H) )



Lift Wall Formwork-FL-1(6.7mx3.mx0.3m(THK)x5m (H) )&FL-2(2.4mx2.4mx0.3m(THK)x5m (H) )



Lift Wall Formwork-FL-5(2.4mX2.4mx0.3m(THK)x3.5m (H) )



Lift Wall Formwork-FL-5(2.4mX2.4mx0.3m(THK)x3.5m (H) )



Lift Wall Formwork-FL-5(2.4mX2.4mx0.3m(THK)x3.5m (H) )



Lift Wall Formwork-FL-2(8.25mx6.45mx0.3m(THK)x3.5m (H) )

## Corewall Formwork

Project: 6 Sty Warehouse with 2-storey Container Depot and Ancillary Office at Sunview Road/Way

Building: 6 storeys

Typical Floor Height: 12.6 m

Total Height: 77.37 m

Scope: Formwork for car ramp columns, 12m-high factory building columns, lift (elevator) shafts, and stairwell climbing formwork systems.